

Let's explore how NABIDH can help you as a patient



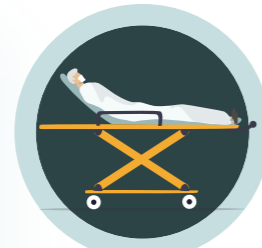
Omar

**60 Years Old
Small Business Owner**

Omar is a light smoker and has a sedentary lifestyle. He has high blood pressure, diabetes and high cholesterol.

#NABIDH

Visit nabidh.ae for more information.



While returning from work, Omar is in a car accident. An ambulance brings an unconscious Omar to Hospital A

- ☆ Emirates ID helps identify Omar
- ☆ Easy access to health information during a medical emergency



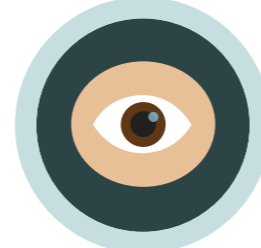
Omar being a new patient at Hospital A, the ER doctor uses emergency access to view Omar's full medical history on NABIDH

- ☆ 360° view of Omar's medical history and current medications



The ER doctor diagnoses Omar with a left ankle fracture and schedules an orthopaedic surgery. The physician also notices that Omar had a surgery 2 years back

- ☆ NABIDH has all the information from various facilities unified under one record and updated near real-time. The report from this ER is also updated automatically on to NABIDH.



During the post-discharge appointment, Omar complains of blurry vision. The doctor notices the lens of Omar's eye looks cloudy and refers him to an Ophthalmologist at Hospital C

- ☆ The doctor's referral notes in NABIDH are easily accessible.



Post-surgery, the discharge summary, medications and the lab results are all available on the NABIDH Clinical

- ☆ Physicians can make a more accurate diagnosis as the complete health record is available on NABIDH



The Ophthalmologist conducts a full eye exam and retrieves the lab test results on NABIDH from Omar's recent treatment at Hospital A. She recommends Omar for cataract surgery to replace the cloudy lens with a clear artificial one

- ☆ Saves the patient time and money to repeat tests
- ☆ Retinal exam is available for diabetes care



Omar's information helps the Dubai Health Authority analyse the diabetes upward trend. The team extracts a list of diabetic patients and administers a customised preventative program

- ☆ Continuous coordinated care across private and public health domains
- ☆ Cohort population health management initiatives
- ☆ Chronic disease management trending

LEGEND:



BENEFITS



CLINICAL PORTAL



EMERGENCY ACCESS